

Why Oscar Furniture?

Oscar have decades of experience in manufacturing furniture.

Anthony Op de Coul inherited the business from his father Leo and carries on a proud family tradition of quality without compromise.



Australian Made

All B24 chairs are made in Horsham, Australia. The super-strong chassis and mechanism is the result of Oscar's own research and development, and is a unique to the B24 lift chair. Expert upholsterers assemble each chair to exacting standards using only quality materials.



Start with the chair in a comfortable standard seating position.



Elevate the feet to reduce pressure on the lower back.



Fully recline the chair for a comfortable sleeping position.



Elevate the chair to assist with sitting and standing.

Choose from "Wall-saver" or "Independent recline" actions

Wall-saver

The single motor wall saver operation of the Hudson and Barwon allows the chair to move forward while the backrest reclines. This Oscar feature reduces the space that the chair occupies in the room because the reclined backrest does not hit the wall. Lift, recline and footrest operate from one motor.

Independent recline

Dual motor option lets the user recline the back without effecting the footrest, allowing a greater range of comfort. This option also increases range of motion to get a completely lay-flat back.

Choose from two roll or three roll designs.

Barwon three-roll back.

Top two rolls are filled with a fibrous filling that has a wonderful soft feel. Bottom roll is a supportive foam



Barwon is the ultimate in softness and luxury.

Hudson has a two-roll back.

The lower back pad is made from foam and has better lower back support.



Hudson especially suits people recovering from back surgery or general lower back pain.

**Brumby style back

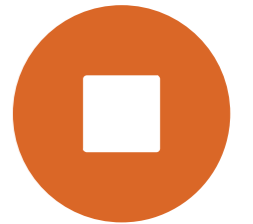
Hudson is available with the classic 'Brumby' style double large roll back on request.



For Customers who love our classic Brumby look.

B24 comes standard as **3-roll back** with a velcro attached back cushions. The velcro makes it cheap and easy to clean or replace cushions on site, and can help make minor adjustments to their positions on delivery.

oscar
FURNITURE

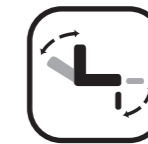


Client who spend most of their day in the chair need a high level of comfort to avoid pressure soreness and muscle pain.

Action:



Lift Assist



Dual Action



Wall Saver

Seating:

Optional Pressure care memory foam

Wheels:

125mm front wheel with rear brake pedal.
75mm rear swivel wheels

Capacity:

Chair lift 130 kilograms

Controller:

Standard on right side, Left side on request
24V Battery backup comes as standard for chord free all day operation.

The B24 Mobile all-day chair can be customised to fit the client and the oscar range of fabrics caters for any taste.



Secure grab handle

The large grab handle is designed to assist the carer to move the chair with the client on-board. Less patient transfers into and out of the chair results in reduced risk of injury and discomfort for both client and carer.



Easy movement of the client

Large recessed fixed front wheels and large swivel rear wheels make moving the B24 with client on-board easy and safe. The large foot operated brake gives both the client and carer security.



24 volt battery operation

The Oscar B24 has a 24 volt battery system allowing the chair to operate for a full day without connection to a power outlet. The B24 is conveniently mobile and no electrical leads means less trip hazards for carers.

B24 shown in Oscar Dot fabric with optional anti-bacterial contact surfaces

B24

lift-recline all-day chair
Seat lift 130kgs

Size A (small) • Size B (large)

Specifications B24 Lift-Recline Mobile Chair

B24 size specification and customisations

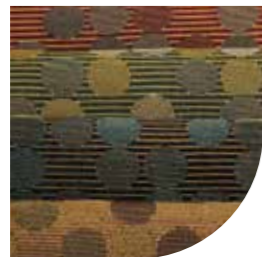
	Adjustments (mm)		Starting Measurement	Adjustments (mm)		
Seat Depth	-50	-25	490mm	+25	+50	+75
Back Height	-90	-60	647mm	+30	+60	+90 +120 +150
Scapular Height	Linked to Back Height		440mm	Linked to Back Height		
Arm Height	-60	-30	180mm	+30	+60	
Extended Footrest	-50	-25	N/A	+25	+50	
Seat width	-150	-100	540mm	+50		
Seat Height	*-50	-30	476mm	+20	*+40	

	Adjustments (mm)					Starting Measurement	Adjustments (mm)				
	-75	-50	-25			520mm	+25	+50			
	-150	-120	-90	-60	-30	688mm	+30	+60	+90	+120 +150	
	Linked to Back Height					481mm	Linked to Back Height				
		-60	-30			190mm	+30	+60			
		-50	-25			N/A	+25	+50			
	-150	-100	-50			540mm	+50				
	*-50	-30	-20			496mm	+25	*+45			

Yellow Fields indicate where dimensional changes are achieved through changes in foam thickness

A Size Modifications

B Size Modifications



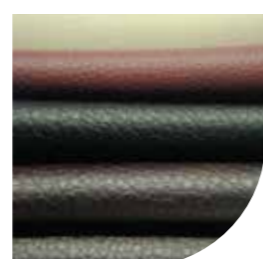
Developed as a stylish and waterproof wipe down fabric, suitable for the health care industry.
Red Gum, Pistachio, Forest, Coffee



100% polyester with 100% polyethylene, anti bacterial function. This fully waterproof, 4 way stretch, easy care soft fabric is suitable for sufferers of incontinence and was developed with high care chairs in mind.
Sage, Basil, Steel Blue, Smoke



Our 100% Polyester suede is a stain resistant durable micro suede in a range of popular colours.
Moss, Olive, Nutmeg, Espresso, Raisin, Charcoal, Navy, Terracotta



Oscar vinyl is made with the healthcare industry's needs in mind. Available in fine and coarse grains.
Fine: Sand, Merlot
Coarse: Coal, Eggplant, Dark Brown



Genuine cowhide leather has long been the first choice for discerning customers. Oscar leather features a rich, warm feel with excellent durability.
Oscar Leather Fawn, Oscar Leather Bark, Beaujolais, Chocolate, Onyx



Customers will enjoy the textured finish of Monza fabric. Soft and welcoming, yet durable and hard wearing, Monza will spoil you every time.
Bone, Plum, Chocolate, Charcoal

B24 lift-recline all-day chair
Seat lift 130kgs

Size A (small) | Size B (large)

The B24 has been designed for clients that may otherwise spend their day in bed.

The chair is comfortable for all-day use and can transport the client from room to room without removal from the chair.

The B24 has cordless operation and the 24 volt battery caters for a full day of use and re-charges overnight.

Carers love the strong handlebar, large wheels and easily accessible wheel brake.

Moving the chair is quick, easy and safe for the carer and client.



OSCAR FURNITURE HEAD OFFICE

6 King Drive, Horsham, Victoria 3400 Australia
(03) 5381 1404 | sales@oscarfurniture.com.au
www.oscarfurniture.com.au